



MPTouch Interactive™





The MPtouch interactive™ (MPti™) is a purpose-built, robust, 5" Android tablet player with a high quality, scratch-resistant capacitive touchscreen and a battery pack designed for all-day repeat rental distribution.

The device is ruggedised with an integral rubber frame to withstand mass use, making it easy and comfortable to hold, and can be provided with a wider lanyard ideal to promote event, sponsor or site branding.

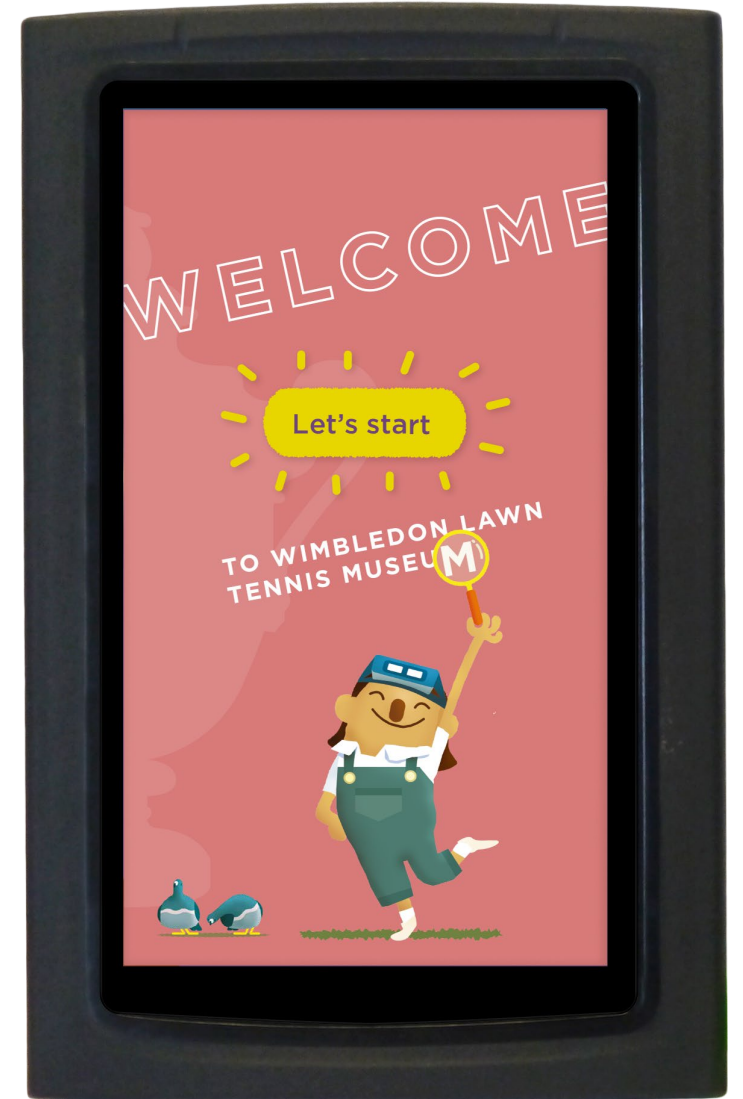
The tablet is WiFi-enabled and can be used with third party apps or for content built and played on the device's custom TourBuilder™ platform.

The MPti™ is supplied complete with flexible modular chargers and storage, reliable and comfortable headphones, data capture and analysis capability as well as the Reptor™ upload and download software suite, as standard.



Imagineear

- An easy-to-use, comfortable-to-handle, reliable and familiar Android-based device
- Large 5" capacitive touchscreen delivers stunning interactive multimedia experiences for maximum visitor engagement
- Integral HD camera and visual recognition technology, supporting augmented reality and content triggering, will amaze visitors and create lasting and memorable tour experiences
- Control and creatively present tour content using pre-loaded TourBuilder™ software
- Versatile Android operating system with 5-in-1 connectivity chip including wifi, Bluetooth & GPS
- Compatible with Imagineear's ground-breaking Multimedia GroupGuide™ system giving guides the ability to trigger multimedia content to group visitors
- Robust design, purpose-built for mass distribution and repeat rental, all day every day
- Long battery life, modular charging units and stereo headphones for seamless logistics
- In-built alarm system to effectively manage security



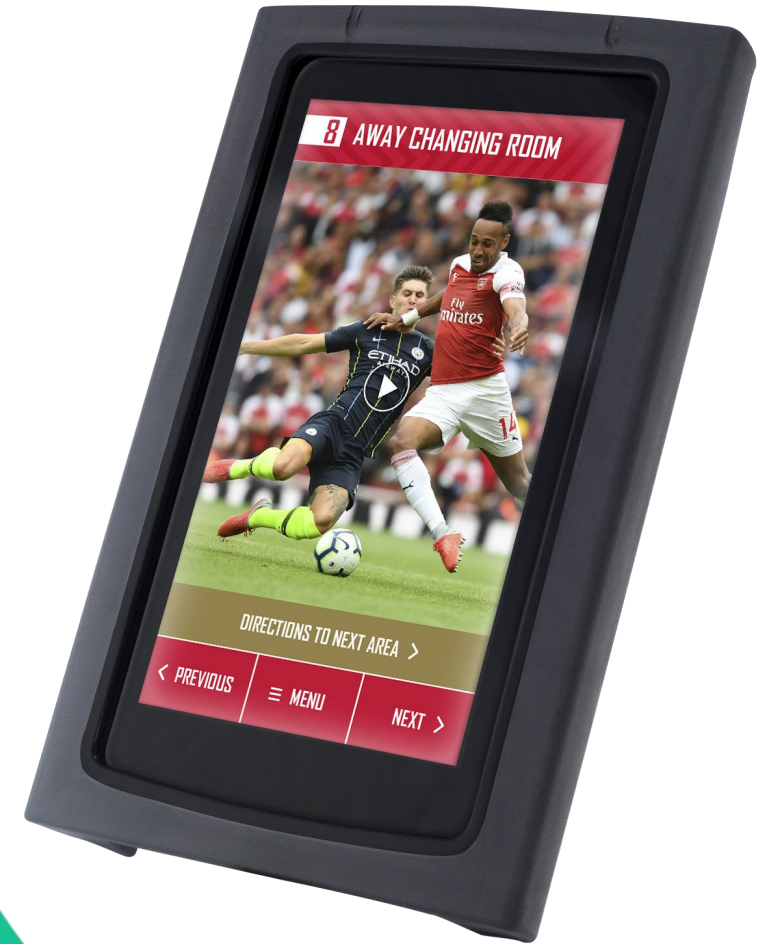


PHYSICAL

Weight:	248g
Length:	15cm
Width:	9.5cm
Depth:	1.7 cm
Fastening:	Loop slot for lanyard
Headset Jack Socket:	1x3.5 mm
Protection:	Rubber coating to sustain repeated use

SCREEN

Size:	5" screen, 16:9 ratio
Type:	Capacitive In-Plane vSwitching (IPS) with wide viewing angle and active touch panel. Antiglare, sufficiently bright for use outside in normal conditions.
Protection:	Shock/scratch resistant IPS
Resolution:	720x1280, 5": 294 ppi
IPS Luminance:	250 cd/m ²
Brightness:	Controlled via Android LCD: Off when in standby mode during charging. LCD restored to default brightness when undocked.





HARDWARE

Processor:	A 33 Allwinner
RAM:	1GB DDR
Flash Memory:	16GB, directly accessible via USB.
Micro-SD Socket:	Yes, up to 256GB, secured access from inside player
Charging and Data Connection:	Modular, via 1×OTG USB 2.0 mini-USB connector
Speaker:	External
Alarm:	Yes
Turning Device on/off :	Special sequence of key presses required
Power-Saving Mode:	Automatic, after adjustable period of idle activity
Camera:	5Mpx
Gyroscope:	Yes
Magnetometer:	Yes
Orientation:	Yes

SOFTWARE

Platform:	Android kernel, version 6.0.1 API level 23
Restoring Default settings:	Ability to perform hardware/factory reset
Flash/SD Memory:	Treated as MTP devices [Win/macOS]
Playback:	Landscape or portrait



Battery:	Li-ion 4500mAh with integral 4.1 VDC overcharge protection cut off chip
Charging:	Via mini-USB, 5 VDC. Fully charged within 6hrs. Charging status (LED) indicator visible when charging using rack
Continuous Playtime:	8 hrs minimum Discontinuous Playtime: 12 hrs, under normal usage conditions
Battery Life:	Minimum 750 charge cycles. Replacement recommended there after
Low Battery Level warning:	Yes

COMPLIANCE

Device:	CE, ROHS and FCC article 15, Class C compliance
Battery:	Passes Part III, Sub-Section 38.3 of the UN Manual of Tests and Criteria.
Battery shipments comply with:	IATA shipping rules UN3480/1, PI965/966/967

CONNECTIVITY

Wi-Fi:	802.11 a/b/g/n/ac (wave II)
Bluetooth:	5.0 incl BTLE
GPS:	With A-GPS support
Connect:	Alarm/data channel
FM:	Radio with headset cable as antenna



CHARGING RACK

PHYSICAL

Slots/Rack: 10 Players
Height: 29.5cm
Width: 15.3cm
Depth: 15cm
Weight: 2.4kg
Colour: Black

POWER SUPPLY

Input Power: 90~240 VAC
Output Power: 5 VDC, 13A, 65 Watt
Power Connector: IEC 3-pin male female, cascading, one per horizontal row
Power Charging: 5 VDC, 1300 mA per port
Fuse: 1000mA, per charger

FUNCTIONAL

Inter-connectivity: Modular, stackable vertically or horizontally
Data Connections: USB 2.0 high speed (480 Mbps) for each port (internal 11-port USB 2.0 HUB) 1x mini-USB output (PC or other rack)

COMPLIANCE

Certification: CE, ROHS, WEEE, FCC (Class A)





HEADPHONES

PHYSICAL

Type: Behind-the-neck
Weight: 46g
Colour: Black

FUNCTIONAL

Nominal impedance: 32 Ohms
Frequency: 20hz-20Khz (-10 dB/1 kHz)
Ear Cover: Removable and washable foam pads
Connector: 3.5mm stereo jack
Cable: 90cm, fully detachable

COMPLIANCE

Certification: CE, WEEE Imagineear can source and provide alternative headset models, including in-ear earbuds

